

Inhibitor Cocktails

Protease Inhibitor Cocktail

Phosphatase Inhibitor Cocktail

Table of Contents

Protease Inhibitor Cocktail

HY-K0010	Solution (EDTA-Free, 100× in DMSO)	1
HY-K0011	mini-Tablet (EDTA-Free)	2

Phosphatase Inhibitor Cocktail

HY-K0021	I: Solution (100× in DMSO)	3
HY-K0022	II: Solution (100× in ddH ₂ O)	4
HY-K0023	III: Solution (100× in DMSO)	5

About MCE

MCE (MedChemExpress) 致力于为全球客户提供最新最全的高品质抑制剂、激动剂和化合物库。5000多种产品涉及各热门研究领域及信号通路。

- 设有专业的实验中心和严格的质控体系，确保产品的高纯度、高品质
- 专业团队跟踪最新的科研进展，为您提供全球最新的活性化合物
- 生物活性经各国客户实验验证，并发表于多种顶级期刊 (*Nature*, *Cell*, *Science*...)
- 与世界知名制药公司及科研机构建立了长期的合作

Our Product Portfolio Includes:



Inhibitor Cocktails



Inhibitors



Screening Libraries



Disease-Related Products



Antibody-Drug Conjugate
Related Products



Natural Products



Dye Reagents



Vitamin D-Related Products

And More!

Protease Inhibitor Cocktail (EDTA-Free, 100× in DMSO)

Cat. No.: HY-K0010

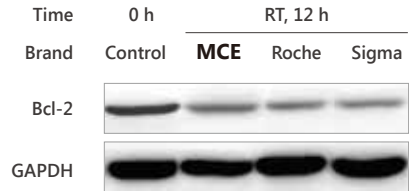
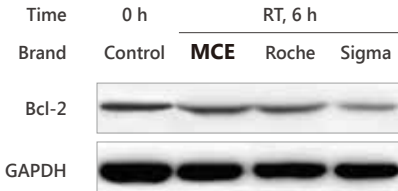
Protease inhibitor cocktail is used in mammalian cell lysates or tissue extracts to increase protein stability.

应用领域:

Western Blot, Co-IP, pull-down, IF, IHC, kinase assay and others.

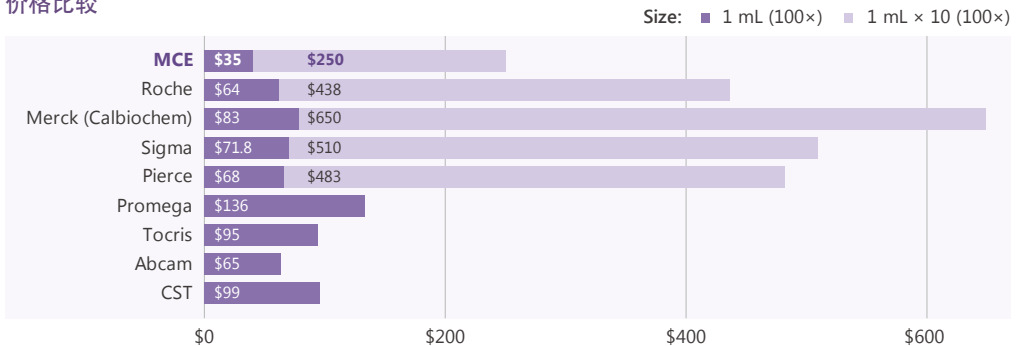
Pre-dissolved in DMSO	Price
1 mL	RMB 230
1 mL × 10	RMB 1630
1 mL × 50	RMB 6500
1 mL × 100	RMB 9750

实验效果验证



MCE Protease Inhibitor Cocktail provides Bcl-2 protection in thyroid cancer cell line 8505C, and is most effective after 6-12 hours incubation at room temperature.

价格比较



产品组分

组分	作用靶点	100× 浓度
AEBSF	Serine proteases	104 mM
Aprotinin	Serine proteases	80 μM
Bestatin	Aminopeptidases	5 mM
E-64	Cysteine proteases	1.5 mM
Leupeptin	Serine and cysteine proteases	2 mM
Pepstatin A	Aspartic proteases	1.5 mM

Protease Inhibitor Cocktail, mini-Tablet (EDTA-Free)

Cat. No.: HY-K0011

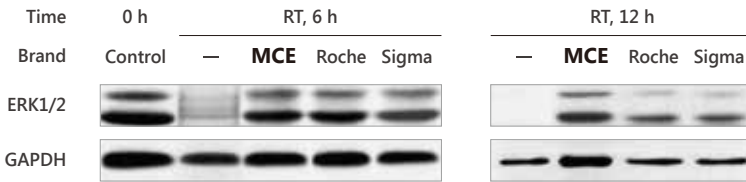
Protease inhibitor cocktail is used in mammalian cell lysates or tissue extracts to increase protein stability. **One mini-Tablet can be added to 10 mL extraction medium directly.**

应用领域:

Western Blot, Co-IP, pull-down, IF, IHC, kinase assay and others.

mini-Tablet	Price
25 pcs	RMB 950
50 pcs	RMB 1550

实验效果验证



MCE Protease Inhibitor Cocktail (mini-Tablet) protects ERK1/2 in K1 cell line, and is most effective after 6-12 hours incubation at room temperature.

产品组分

组分	作用靶点	抑制类型
AEBSF	Serine proteases	Irreversible
Aprotinin	Serine proteases	Reversible
Bestatin	Aminopeptidases	Reversible
E-64	Cysteine proteases	Irreversible
Leupeptin	Serine and cysteine proteases	Reversible

Phosphatase Inhibitor Cocktail I (100× in DMSO)

Cat. No.: HY-K0021

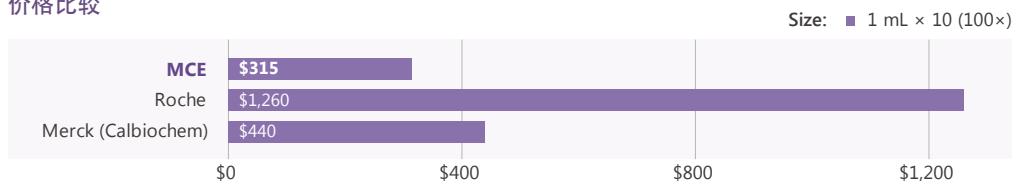
Phosphatase Inhibitor Cocktail I effectively inhibits alkaline phosphatases and serine/ threonine protein phosphatases such as PP1 and PP2A.

应用领域:

Western Blot, Co-IP, pull-down, IF, IHC, kinase assay and others.

Pre-dissolved in DMSO	Price
1 mL	RMB 290
1 mL × 10	RMB 2050
1 mL × 50	RMB 8645
1 mL × 100	RMB 12940

价格比较



产品组分

组分	作用靶点	100× 浓度
(-)-p-Bromotetramisole oxalate	Alkaline phosphatases	2.5 mM
Cantharidin	Ser/Thr phosphatases	500 μM
Microcystin LR, <i>Microcystis aeruginosa</i>	PP1 and PP2A	500 nM

Phosphatase Inhibitor Cocktail II (100× in ddH₂O)

Cat. No.: HY-K0022

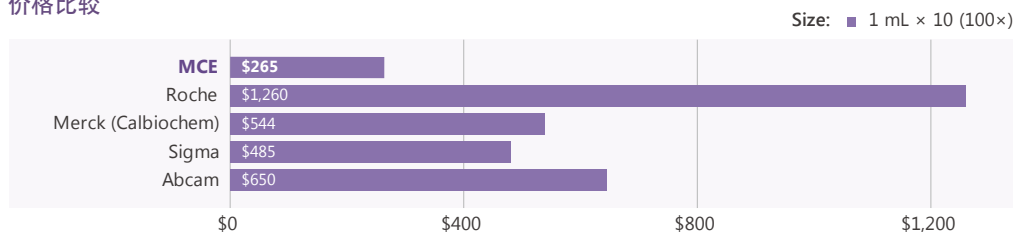
Phosphatase Inhibitor Cocktail II effectively inhibits acid and alkaline phosphatases as well as protein tyrosine phosphatases (PTPs).

应用领域:

Western Blot, Co-IP, pull-down, IF, IHC, kinase assay and others.

Pre-dissolved in ddH ₂ O	Price
1 mL	RMB 250
1 mL × 10	RMB 1720
1 mL × 50	RMB 7189
1 mL × 100	RMB 10790

价格比较



产品组分

组分	作用靶点	100× 浓度
Sodium Fluoride	Acid phosphatases	100 mM
Sodium Orthovanadate	Alkaline phosphatases, PTPs, ATPases	100 mM
Sodium Tartrate Dihydrate	Acid phosphatases	400 mM
Sodium Molybdate	Acid and phosphoprotein phosphatases	115 mM
Imidazole	Alkaline phosphatases	200 mM

Phosphatase Inhibitor Cocktail III (100× in DMSO)

Cat. No.: HY-K0023

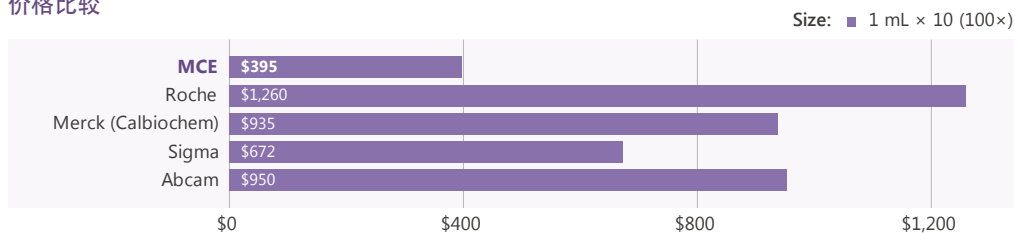
Phosphatase Inhibitor Cocktail III effectively inhibits serine/threonine and alkaline phosphatases.

应用领域:

Western Blot, Co-IP, pull-down, IF, IHC, kinase assay and others.

Pre-dissolved in DMSO	Price
1 mL	RMB 358
1 mL × 10	RMB 2568
1 mL × 50	RMB 11960
1 mL × 100	RMB 17973

价格比较



产品组分

组分	作用靶点	100× 浓度
(-)-p-Bromolevamisole oxalate	Alkaline phosphatases	2.5 mM
Cantharidin	Protein phosphatase 2A (PP2A)	500 μM
Calyculin A	Protein phosphatases 1 and 2A (PP1 and PP2A)	1 μM



Inhibitors • Agonists • Screening Libraries

www.MedChemExpress.cn

MCE 中国

Tel: 021-58955995

技术支持: 021-58950656

Hotline: 400-820-3792

Fax: 021-53700325

企业QQ: 4008203792

E-mail: sales@MedChemExpress.cn

MCE USA

Tel: 609-228-6898

Address: 1 Deer Park Dr, Suite Q, Monmouth Junction, NJ 08852, USA

Fax: 609-228-5909

E-mail: sales@MedChemExpress.com

MCE Europe

Tel: +4686500910

Address: Bergkällavägen 37 lokal 24 192 79 Sollentuna SWEDEN

Fax: +4686531025

E-mail: eu.sales@MedChemExpress.com